

THE STATE OF COMMUNICATION TECHNOLOGY IN THE WORKPLACE

A workplace can only function with effective communication. Professionals today need to answer: **How can I communicate well? Manage conflict? Persuade others?** The right communication master's program should address these questions so that graduates are equipped to adapt to the constantly evolving state of workplace communication.

WHERE ARE EMPLOYEES WORKING?

Work environment dictates which communication mediums will be most effective.

AVERAGE HOURS PER WEEK:

- 19.6** Office or cubicle
- 5.4** Non-office workspace
- 4.6** Home
- 3.3** Office, away from desk
- 2.6** Client location



*Reported by Technalysis Research

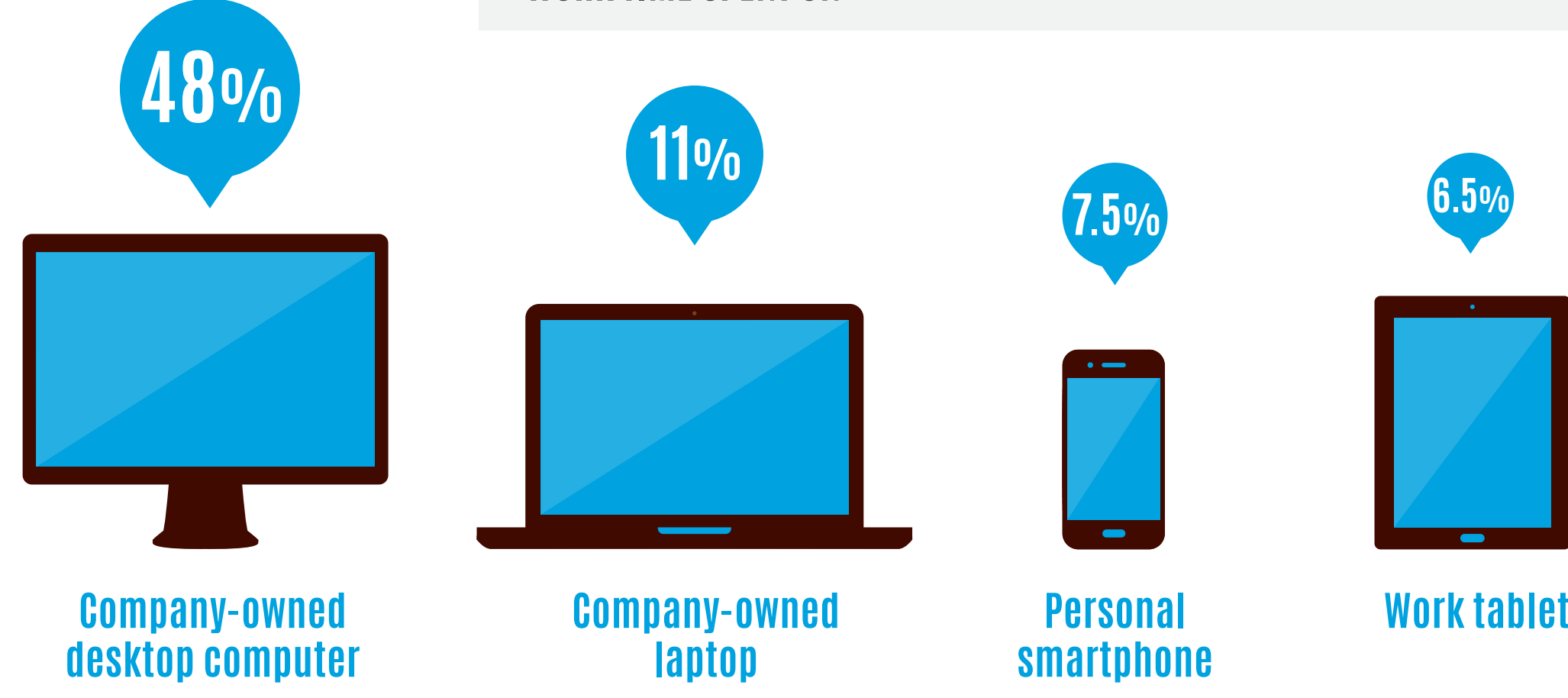
Between 2018 and 2028, hiring managers believe that as much as 38% of their full-time workforce will work from home.



*Polled by Inavero and Upwork

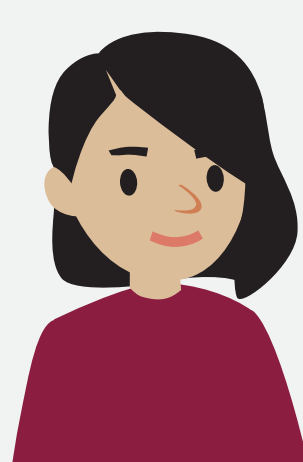
WHICH TECHNOLOGIES ARE EMPLOYEES USING?

WORK TIME SPENT ON:



*Reported by Technalysis Research

YOUNGER EMPLOYEES ARE MORE LIKELY TO OWN THEIR OWN DEVICES.



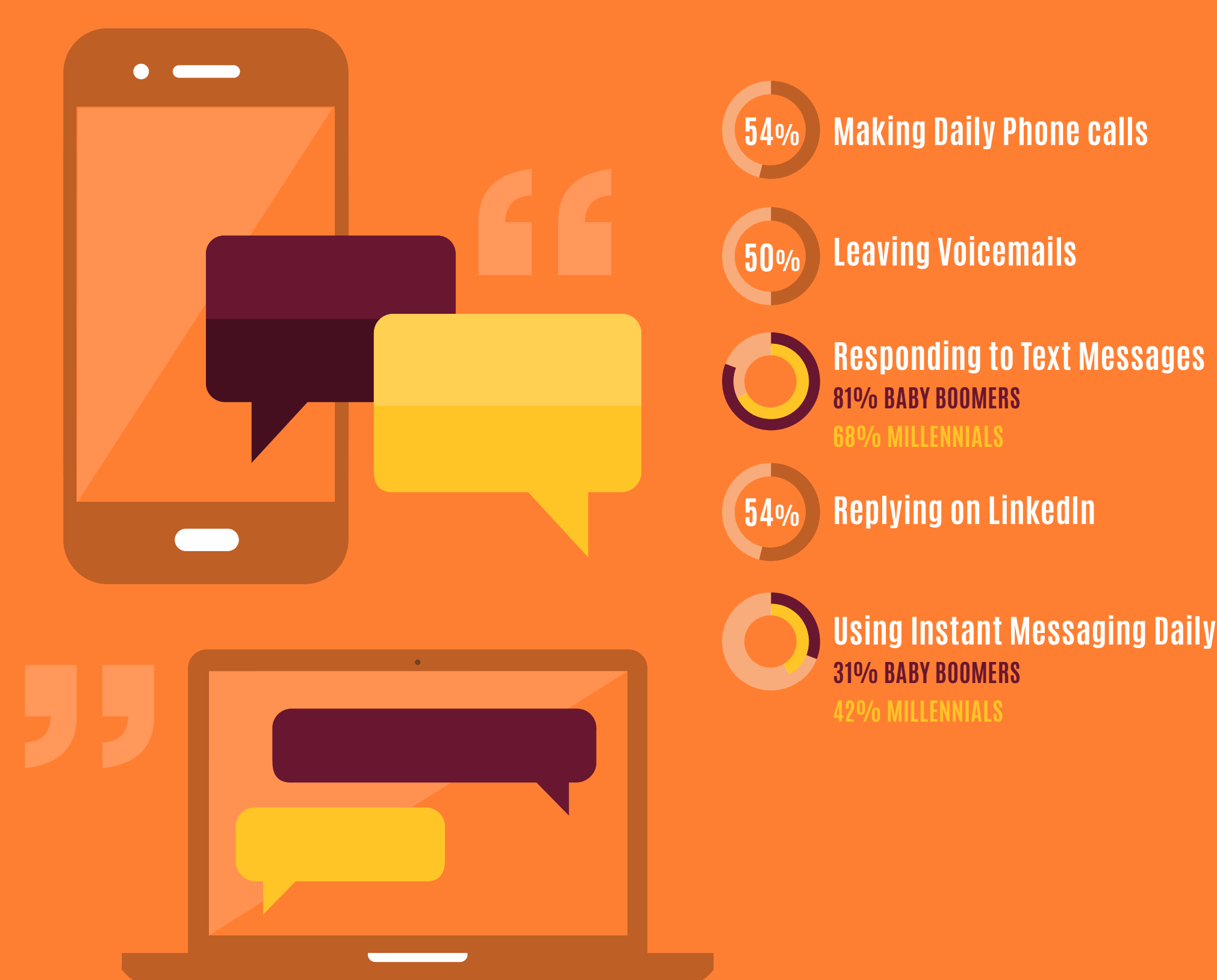
Younger than 45:
29%



Older than 45:
19%

WHICH COMMUNICATION TOOLS DO EMPLOYEES PREFER?

A survey polled workers from millennials to baby boomers. How did they communicate?



*Results from InsideSales.com survey

GENERATIONAL DIFFERENCES DON'T ALWAYS MEAN DIFFERENCES IN COMMUNICATION PREFERENCES. Communication is going digital: Face-to-face communication and phone calls are giving way to instant messaging and social media.

ARE YOU INTERESTED?

Knowledge of the modern state of communication technology is a must for employees to keep up with the times. The Master of Arts in Communication program online at Arizona State University educates students on communication in the workplace so graduates can implement best practices in their careers.

Through courses that cover subjects such as global communication, social influence and persuasion, conflict transformation, gender and communication and more, an MA in Communication can help prepare you for success no matter how – or with who – you need to communicate.